



**Hella Gutmann keeps  
vehicles on the road**

Product catalogue

# YOU CAN ALWAYS ASK A GOOD FRIEND ANYTHING.



**IN OUR TECHNICAL KNOWLEDGE  
DATA BASE, YOU WILL FIND  
ANSWERS – PLAIN, CLEAR-CUT  
AND FREE OF CHARGE:**

[www.hella.com/techworld](http://www.hella.com/techworld)

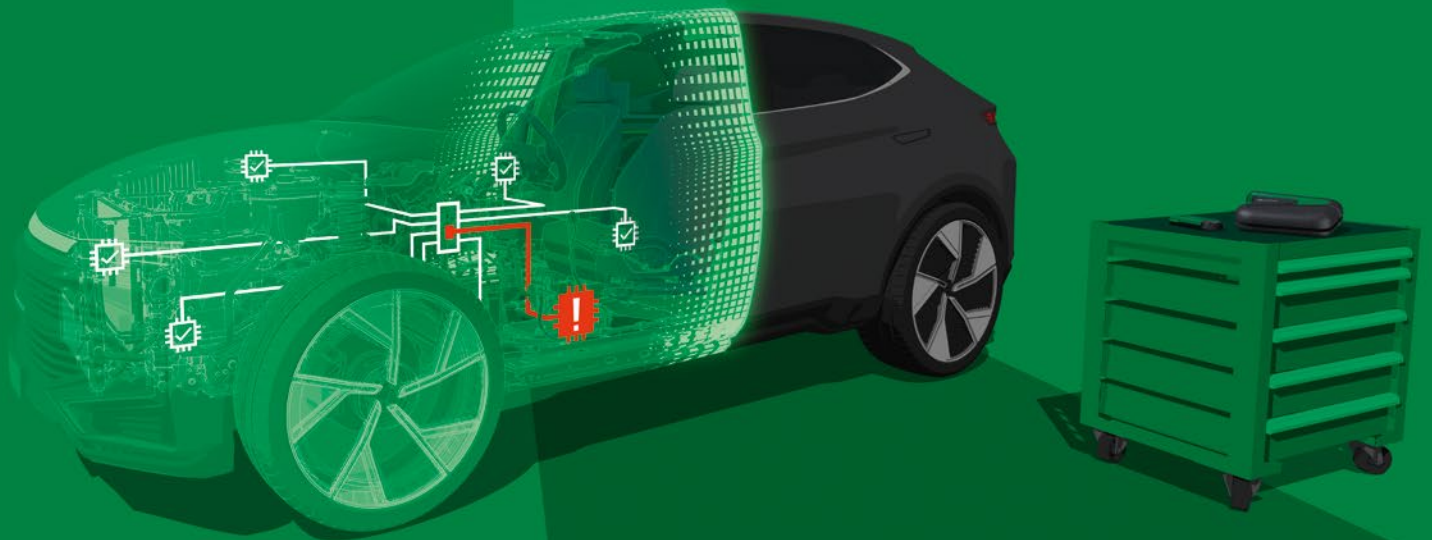


# Contents

<b>VEHICLE DIAGNOSTICS</b>	<b>4</b>	<b>ADAS CALIBRATION AND ADJUSTMENT</b>	<b>18</b>
<b>mega macs diagnostic devices</b>	<b>5</b>	<b>Calibration of front camera and sensors</b>	<b>19</b>
mega macs X	5	CSC-Tool PRO	19
		CSC-Tool SE	22
<b>Optional equipment for the mega macs X</b>	<b>6</b>	<b>Mobile calibration of front camera and sensors</b>	<b>23</b>
mega macs S 20	10	CSC-Tool Mobile	23
mega macs PLUS	12		
mega macs PC SE	14	<b>Calibration of rearview and all-round vision camera</b>	<b>24</b>
<b>Equipment for vehicle diagnostics</b>	<b>15</b>	<b>Calibration of radar sensors</b>	<b>27</b>
		<b>Calibration of laser sensors</b>	<b>30</b>
<b>SERVICE SOLUTIONS</b>	<b>16</b>	<b>Reference panels for camera calibration</b>	<b>30</b>
<b>Digital Services</b>	<b>17</b>	<b>Optional accessories for the CSC-Tool</b>	<b>32</b>
HGS DATA	17		
		<b>HEADLIGHT AIMING</b>	<b>36</b>
		<b>Headlight aiming devices</b>	<b>37</b>
		<b>Rail systems</b>	<b>39</b>

# Flexible solutions for any workshop

Vehicle diagnostics from Hella Gutmann



Welcome to the mega macs family. Reliable communication with all the relevant vehicle systems as well as the fast localization and interpretation of vehicle data and trouble codes are among the most pressing issues for workshops today.

Profit from the advantages our sophisticated, state-of-the-art diagnostic technology has to offer.

# mega macs diagnostic devices

## mega macs X



### FREEDOM OF CHOICE AT ALL LEVELS

Vehicles evolve and so does the communication with them. Therefore, Hella Gutmann has rethought the world of diagnostics and diagnostic data and created the mega macs X: The all-in-one car translator.

Just like the vehicle user, workshops should have the freedom to choose which functions, technical data, and hardware they require for multibrand diagnosis. Always bearing in mind that what is common practice today might be obsolete tomorrow. As to the mega macs X – this is simply a question of the configuration.

Item no. 8PD 015 265-861

You can find the scope of performances of the different licence packages on page 9

### ALL BENEFITS AT A GLANCE

- Investment security and flexibility thanks to one hardware for all needs
- Display and operating unit (tablet, PC, etc.) is installed in the mega macs X independently from the hardware and diagnostic software
- Supports DoIP and CAN FD
- Inductive charging tray
- Integrated LED lighting at the OBD plug
- Supports 12 V and 24 V
- Can be expanded with measuring technology/ high-voltage technology (see following page)

### STANDARD DELIVERY CONTENTS

- mega macs X
- Charging tray
- Power adapter
- Power cord
- USB cable
- Quick start guide

MEGA MACS X	
Processor	<ul style="list-style-type: none"> <li>• ARM dual processor 1.2 GHz</li> <li>• RAM 2 GB DDR3</li> <li>• EMMC 32 GB</li> </ul>
Interfaces	<ul style="list-style-type: none"> <li>• USB-C</li> <li>• DC-In</li> <li>• Ethernet</li> </ul>
Supply voltage	12 V – 24 V DC
Temperature of work area	0 to 45 °C
Storage temperature	-10 to +50 °C
Weight	1420 g
Dimensions	210 × 193 × 80 mm (H × W × D)
Requirements on an external displaying device	<ul style="list-style-type: none"> <li>• Screen diagonal 25,4 cm (10")</li> <li>• Screen resolution at least 1024 × 768 Pixel</li> <li>• Wi-Fi corresponds to IEEE 802.11 n</li> <li>• Google Chrome browser at least version 81</li> </ul>

CHARGING TRAY FOR MEGA MACS X	
Non-contact charging procedure	Inductive energy transfer according to Hella Gutmann standard (no Qi charging procedure)
Supply voltage	15 V DC
Temperature of work area	0 to 45 °C
Storage temperature	-10 to +50 °C
Weight	590 g
Dimensions	164 × 164 × 37 mm (H × W × D)

SOFTWARE MEGA MACS X *
<b>SDI-Module X<sup>1</sup></b> (software module for licence X <sup>1</sup> ) Item no. 8PY 015 267-591
<b>SDI-Module X<sup>2</sup></b> (software module for licence X <sup>2</sup> ) Item no. 8PY 015 267-601
<b>SDI-Module X<sup>3</sup></b> (software module for licence X <sup>3</sup> ) Item no. 8PY 015 267-611
<b>SDI-Module X<sup>4</sup></b> (software module for licence X <sup>4</sup> ) Item no. 8PY 015 267-621

LICENCES FOR THE MEGA MACS X **
<b>Licence X<sup>1</sup></b> (for the mega macs X with SDI-Module X <sup>1</sup> )*** Item no. 8PY 015 268-701
<b>Licence X<sup>2</sup></b> (for the mega macs X with SDI-Module X <sup>2</sup> ) Item no. 8PY 015 268-711
<b>Licence X<sup>3</sup></b> (for the mega macs X with SDI-Module X <sup>3</sup> ) Item no. 8PY 015 268-721
<b>Licence X<sup>4</sup></b> (for the mega macs X with SDI-Module X <sup>4</sup> ) Item no. 8PY 015 268-731

\* One-time costs

\*\* Monthly costs from the 7th month

\*\*\* For Free

# Optional equipment for the mega macs X

## Measurement module MT-HV

Also usable for bike section



### EXTRA COMFORT AND CONVENIENCE – THE BLUETOOTH® MODULE FOR ALL HIGH-VOLTAGE AND LOW-VOLTAGE MEASUREMENTS

The MT-HV measurement module tailored to the mega macs X, was created specifically for work on electric and hybrid vehicles. It houses the high-voltage measuring technology and a module slot for inserting the low-voltage measurement modules MT-56 and MT-77. This clever design transforms the MT-HV into a wireless measurement module for high-voltage and low-voltage measurements – a particularly attractive solution if you already have the additional mega macs 56/77 module. Optionally, you can purchase the HT-HV and the MT 77 in one package.

#### FUNCTIONS\*

- Multimeter
- 2-channel oscilloscope
- Guided Measurements
- Pressure measurements\*\*
- High-voltage measurements
- Guided high-voltage measurements
- High-voltage measurements up to 1000V
- Insulation resistance measurements with adjustable test voltage
- Potential equalization measurements of HV components
- Resistance measurements on HV service disconnect plug



	MT-HV BASIC *	MT-HV PLUS *	MT-HV PRO *
<b>Item no.</b>	8PZ 015 266-171	8PZ 015 266-211	8PZ 015 266-251
<b>Delivery contents</b>	<ul style="list-style-type: none"> <li>• Measurement module MT-HV</li> </ul>	<ul style="list-style-type: none"> <li>• Measurement module MT-HV</li> <li>• High-voltage test leads red/black</li> </ul>	<ul style="list-style-type: none"> <li>• Measurement module MT-HV</li> <li>• High-voltage test leads red/black</li> <li>• Blue/black test lead &amp; red/black test lead</li> <li>• MT 77</li> <li>• Test kit with test probes and alligator clips</li> </ul>

\* The available functions depend on the selected hardware, software and licence of the MT-HV. Software modules and licences may vary from country to country.  
 \*\* Only possible with LPD-Kit

## MT-USB measurement module



### PROFESSIONAL MEASUREMENTS WITH THE EXTERNAL USB MODULE

When the mega macs X is connected via USB cable to the optional measurement module MT-USB, the menu item >Measurements< appears automatically on the SDI user interface of the display unit. Provided that you have Licence X<sup>3</sup> or higher, your diagnostic device will turn into a practical two-channel multimeter for voltage measurements up to 60 volts as well as current and resistance measurements. The settings are performed on the display unit.

Item no. 8PZ 015 266-001

#### PRODUCT CHARACTERISTICS

- Economical product for beginners
- Alternative option for when user does not yet have a measurement module

#### DELIVERY CONTENTS

- 1 × MT-USB
- 1 × Blue/black test lead
- 1 × Red/black test lead
- 1 × Test kit with test probes and alligator clips

MT-HV MEASURING TECHNOLOGY	
Supply voltage	12 to 32V
Power input	10 W typical
Current draw	1 A
Ambient temperature	Recommended: 10 to 35 °C Working range: 0 to 45 °C
Suitable for humid environment?	No
Continuous operation	Yes
Weight	1700 g
Dimensions	300 × 360 × 80 mm (L × W × D)
IP degree of protection	IP20
Overload protection	Max. 1 kV
Measuring channels	1 (galvanically isolated)
Measured variables HV modules	<ul style="list-style-type: none"> <li>• High-voltage measurement up to 1 kV</li> <li>• Potential equalization measurement</li> <li>• Insulation resistance measurement</li> <li>• Resistance measurement (service disconnect plug)</li> </ul>
Interfaces	<ul style="list-style-type: none"> <li>• USB-C</li> <li>• Bluetooth®</li> </ul>

HIGH-VOLTAGE TEST LEAD	
Red	<ul style="list-style-type: none"> <li>• Length: 2970 mm</li> <li>• Handpiece with function button</li> <li>• With 4 mm test connection (safety connector) for manufacturer-specific test adapters</li> <li>• Incl. removable test prod</li> </ul>
Black	<ul style="list-style-type: none"> <li>• Length: 2970 mm</li> <li>• Handpiece</li> <li>• With 4 mm test connection (safety connector) for manufacturer-specific test adapters</li> <li>• Incl. removable test prod</li> </ul>

MT 77	
Supply voltage	5V DC (through module interface)
Power input	Max. 10W
Current draw	Max. 2 A
Ambient temperature	Recommended: 10 to 35 °C Working range: 0 to 45 °C
Suitable for humid environment?	No
Continuous operation	Yes
Weight	Approx. 270 g
Dimensions	43 × 110 × 136 mm (H × W × D)
IP degree of protection	IP20
Bandwidth	Max. 10 MHz
Sampling rate	64 MSa/s
Memory depth	64 kB
Amplitude resolution	14 bit
Measuring channels	2 (galvanically isolated)
Measured variables	<ul style="list-style-type: none"> <li>• Voltage max. 200V</li> <li>• Current (external clamp meter*)</li> <li>• Resistance</li> <li>• Pressure (external LPD-Kit*)</li> </ul>

MEASURING TECHNOLOGY MT-USB	
Supply voltage	5 V (through USB)
Power input	Max. 2.5 W
Current draw	Max. 500 mA, average 300 mA
Ambient temperature	Recommended: 10 to 35 °C Working range: 0 to 40 °C
Suitable for humid environment?	No
Continuous operation	Yes
Weight	Approx. 490 g
Dimensions	38 × 102 × 130 mm (H × W × D)
IP degree of protection	IP20
Bandwidth	Max. 100 kHz
Sampling rate	1 MSa/s
Amplitude resolution	12 bit
Measuring channels	2
Measured variables	<ul style="list-style-type: none"> <li>• Voltage max. 60V</li> <li>• Current (external amps clamp necessary)</li> <li>• Resistance</li> </ul>
Interfaces	USB-C

\* Additional accessories required

## Hella Gutmann-Tablet SE



### EASY IMMEDIATE START WITH THE HELLA GUTMANN-TABLET SE

The practical new all-in package consisting of the mega macs X and the Hella Gutmann-Tablet SE makes vehicle diagnosis particularly easy. The Android tablet SE is not only water and dust resistant (IP65), but it can also withstand a drop from up to 1.5 m. This sturdy tablet is the perfect companion in harsh workshop conditions. Thanks to the ergonomic handstrap, it rests safely and snugly in the hand of the user. Preinstalled apps for the mega macs X, the Hella Academy and Team Viewer ensure a smooth start.

Item no. 8PZ 015 266-501

HELLA GUTMANN-TABLET SE	
Software	Android 11
Operating temperature	-20 to +50 °C
Processor	Qualcomm Adreno 512 GPU
RAM/data storage capacity	<ul style="list-style-type: none"> <li>• 4 GB LPDDR4 RAM</li> <li>• 64 GB eMMC 5.1</li> </ul>
Display	10.1" IPS display easy to read at daylight conditions with WUXGA resolution (1.920 × 1.200 pixels) and antiglare surface
Audio	<ul style="list-style-type: none"> <li>• Mono speaker with up to 94 dB</li> <li>• Internal microphone with noise suppression</li> </ul>
NFC	<ul style="list-style-type: none"> <li>• ISO/IEC 14443 (type A, type B)</li> <li>• FeliCa</li> <li>• ISO/IEC 15693</li> </ul>
Sensors	<ul style="list-style-type: none"> <li>• Ambient light sensor</li> <li>• Digital compass</li> <li>• Gyrosensor and acceleration sensor</li> </ul>
Front camera	5 MP
Rear camera	8 MP with autofocus and LED flash
Interfaces	<ul style="list-style-type: none"> <li>• 1 × USB 3.0 type C (OTG, BC1.2)</li> <li>• 1 × USB 2.0 type A (host only)</li> <li>• 1 × Micro SD/SDXC memory card</li> <li>• 1 × Headset</li> <li>• 1 × Voltage supply</li> <li>• 1 × Port replicator</li> </ul>
Wireless interfaces	<ul style="list-style-type: none"> <li>• IEEE802.11 a/b/g/n/ac/d/h/i/r/k/v/w w MIMO – supports 2.4 GHz- &amp; 5 GHz frequency</li> <li>• Bluetooth® version 5.0 Class 1</li> </ul>
Battery capacity	Dual slim battery (2 × 3200 mAh norm.; 3100 mAh min.)
Battery run time	Up to 9 hours
Dimensions	272 × 196 × 16.4 mm (W × D × H)
Weight	885 g

CHARGING STATION HELLA GUTMANN-TABLET SE	
Supply voltage	<ul style="list-style-type: none"> <li>• Input min. 14.7 V max. 28 V, 4 A</li> <li>• Output min. 14.5 V max. 16.8 V, 4 A</li> </ul>
Temperature of work area	0 to 40 °C
Storage temperature	-10 to +60 °C
Interfaces	1 × Voltage supply

## Overview of licence scopes for the mega macs X

LICENCES MEGA MACS X*			
Licence X <sup>1</sup>	Licence X <sup>2</sup>	Licence X <sup>3</sup>	Licence X <sup>4</sup>
<b>FUNCTIONS</b>			
<ul style="list-style-type: none"> <li>• Reading/deleting trouble codes (without Global Check)***</li> <li>• DoIP/CAN FD technology</li> </ul>	<ul style="list-style-type: none"> <li>• Reading/deleting trouble codes</li> <li>• DoIP/CAN FD technology</li> <li>• Automatic diagnosis</li> <li>• Cyber Security Management</li> <li>• Automatic VIN identification</li> <li>• Global Check</li> <li>• Service reset</li> <li>• Basic settings</li> <li>• Parameters</li> <li>• Codings</li> <li>• Actuator test</li> <li>• Test function</li> <li>• Proposed online solutions based on trouble codes</li> <li>• Automatic mileage reading</li> <li>• HV battery diagnostics BASIC</li> <li>• Read OBFCM-Data****</li> </ul>	<ul style="list-style-type: none"> <li>• Reading/deleting trouble codes</li> <li>• DoIP/CAN FD technology</li> <li>• Automatic diagnosis</li> <li>• Cyber Security Management</li> <li>• Automatic VIN identification</li> <li>• Global Check</li> <li>• Service reset</li> <li>• Basic settings</li> <li>• Parameters</li> <li>• Codings</li> <li>• Actuator test</li> <li>• Test function</li> <li>• Proposed online solutions based on trouble codes</li> <li>• Automatic mileage reading</li> <li>• HV battery diagnostics BASIC</li> <li>• Read OBFCM-Data****</li> </ul>	<ul style="list-style-type: none"> <li>• Reading/deleting trouble codes</li> <li>• DoIP/CAN FD technology</li> <li>• Automatic diagnosis</li> <li>• Cyber Security Management</li> <li>• Automatic VIN identification</li> <li>• Global Check</li> <li>• Service reset</li> <li>• Basic settings</li> <li>• Parameters</li> <li>• Codings</li> <li>• Actuator test</li> <li>• Test function</li> <li>• Proposed online solutions based on trouble codes</li> <li>• Automatic mileage reading</li> <li>• HV battery diagnostics BASIC</li> <li>• Read OBFCM-Data****</li> </ul>
<b>MEASURING TECHNOLOGY**</b>			
		<ul style="list-style-type: none"> <li>• Multimeter</li> </ul>	<ul style="list-style-type: none"> <li>• Multimeter</li> <li>• 2-channel oscilloscope</li> <li>• Guided Measurements</li> <li>• Pressure measurements</li> </ul>
		<ul style="list-style-type: none"> <li>• Required measurement technology (minimum): MT-HV with MT 56 or MT-USB</li> </ul>	<ul style="list-style-type: none"> <li>• Required measurement technology (minimum): MT-HV with MT 77</li> </ul>
<b>DATA</b>			
	<ul style="list-style-type: none"> <li>• HGS Data (2 extra accesses)</li> <li>• Send OBFCM-Data****</li> </ul>	<ul style="list-style-type: none"> <li>• HGS Data (2 extra accesses)</li> <li>• Send OBFCM-Data****</li> <li>• Recall campaigns</li> <li>• Component test values</li> <li>• Component location</li> <li>• Timing belt data</li> <li>• Wiring diagrams</li> <li>• Cabin air filter</li> <li>• Fuses/relays</li> <li>• Flat rate units</li> <li>• Service data</li> </ul>	<ul style="list-style-type: none"> <li>• HGS Data (2 extra accesses)</li> <li>• Send OBFCM-Data****</li> <li>• Recall campaigns</li> <li>• Component test values</li> <li>• Component location</li> <li>• Timing belt data</li> <li>• Wiring diagrams</li> <li>• Cabin air filter</li> <li>• Fuses/relays</li> <li>• Flat rate units</li> <li>• Service data</li> <li>• PIN Data</li> <li>• Service information</li> <li>• Manufacturer campaigns</li> <li>• Battery management</li> <li>• Repair instructions</li> <li>• Diesel information</li> <li>• Interactive wiring diagrams</li> <li>• Symptom-based solutions</li> </ul>
<b>SERVICES</b>			
			<ul style="list-style-type: none"> <li>• Call Flat (technical help line)</li> </ul>

Software modules and licences may vary from country to country. For motorcycle diagnosis, two versions are available. The X-Bike licence is aimed at workshops specializing in motorbikes only. Car workshops wishing to expand can add the optional X-Bike Add-on licence to their portfolio.

\* Corresponding software module required

\*\* Corresponding accessories required

\*\*\* Restrictions may be imposed by the Security Gateway

\*\*\*\* On-Board Fuel Consumption Monitoring

## mega macs S 20



### THE CO-PILOT FOR MORE WORKSHOP POWER

Thanks to the tried-and-tested SDI diagnostic software with intuitive operating concept already used in premium diagnostics, mega macs S 20 offers an efficient option for full vehicle diagnostics with standardised menu navigation. The combination of the diagnostics app with the apps already installed and the Android end device of your choice makes the mega macs S 20 a real high-flyer. With one and the same device, you can diagnose and communicate, retrieve additional information from the network to your workstation, control your time management and much more. The flexible licence system makes mega macs S 20 ideal for beginners, users of a second device or vehicle resellers.

Item no. 8PD 015 265-211

All services of the various licence packages can be found in the overview on page 11

#### ADVANTAGES AT A GLANCE

- Flexible licence system
- Regular updates and growing vehicle coverage
- Direct data transfer of the selected vehicle data to HGS Data Web
- Current communication protocols such as DoIP and CAN-FD integrated
- Clear and intuitive user interface "SDI" (Smart Diagnostic Interface)
- Smart language handling thanks to automatic adoption of the tablet's language setting
- Proposed online solutions based on trouble codes
- Integrated cyber security management
- Realisation of ADAS calibrations possible\*
- Access to the technical centre via the electronic ticket (depending on licence)

#### DELIVERY CONTENTS

- HG-VCI S 20
- Packaging
- USB cable (type C - type A)
- Lanyard
- Safety instruction

HG-VCI S 20	
Voltage OBD	8 – 32V DC
Current OBD	Max. 350 mA
Voltage USB	5V DC
Power USB	Max. 500 mA
Outside air temperature Working range	0 to +45 °C
Storage temperature	-20 to +60 °C
Dimensions	115.5 × 47.5 × 24 mm (L × W × H)
Weight	100 g
Protection class	IP40
Frequency band	2400 to 2483,5 MHz (Bluetooth®)
Field strength	11 dBm
Interfaces	<ul style="list-style-type: none"> <li>• Bluetooth® Classic, Class 1</li> <li>• USB 2.0 Hi-Speed, Type C connector</li> <li>• CARB</li> </ul>
Radio range	<ul style="list-style-type: none"> <li>• Inside: 3 to 10 m</li> <li>• Outside: up to max. 50 m</li> </ul>

SYSTEM REQUIREMENTS DISPLAY UNIT*****	
Operating system	At least Android 10
Memory	Storage capacity ("disc") of at least 8 GB for the app and the associated data must be freely available
Recommended display diagonal	At least 8"
Working memory	At least 2 GB
Camera may be present	Yes
Interfaces	Bluetooth® Classic, Class 1, WiFi

SOFTWARE MEGA MACS S 20 **
<b>SDI-Module S<sup>1</sup></b> (software module for licence S <sup>1</sup> ) Item no. 8PY 015 270-571
<b>SDI-Module S<sup>2</sup></b> (software module for licence S <sup>2</sup> ) Item no. 8PY 015 270-581
<b>SDI-Module S<sup>3</sup></b> (software module for licence S <sup>3</sup> ) Item no. 8PY 015 270-591

LICENCES MEGA MACS S 20 ***
<b>Licence S<sup>1</sup></b> (for mega macs S 20 with SDI module S <sup>1</sup> )***** Item no. 8PY 015 270-411
<b>Licence S<sup>2</sup></b> (for mega macs S 20 with SDI module S <sup>2</sup> ) Item no. 8PY 015 746-121
<b>Licence S<sup>3</sup></b> (for mega macs S 20 with SDI-Module S <sup>3</sup> ) Item no. 8PY 015 270-431

\* A CSC-Tool is required  
 \*\* One-off costs  
 \*\*\* Monthly costs from the 7th month  
 \*\*\*\* Free of charge  
 \*\*\*\*\* A display unit (laptop or PC) is not included in the delivery contents

## Overview of mega macs S 20 licences

LICENCES FOR THE MEGA MACS S 20*		
Licence S <sup>1</sup>	Licence S <sup>2</sup>	Licence S <sup>3</sup>
<b>FUNCTIONS</b>		
<ul style="list-style-type: none"> <li>• Diagnostic port location</li> <li>• Component location</li> <li>• Reading/deleting trouble codes**</li> <li>• Global check**</li> <li>• DoIP/CAN FD technology</li> <li>• Service reset**</li> <li>• Basic settings**</li> <li>• Read OBFCM data***</li> <li>• Printout via e-mail</li> </ul>	<ul style="list-style-type: none"> <li>• Diagnostic port location</li> <li>• Component location</li> <li>• Reading/deleting trouble codes</li> <li>• Global check</li> <li>• DoIP/CAN FD technology</li> <li>• Service reset</li> <li>• Basic setting</li> <li>• Read OBFCM data***</li> <li>• Printout via e-mail</li> <li>• Cyber Security Management</li> <li>• Automatic VIN identification</li> <li>• Car History</li> <li>• Actuator test</li> <li>• Test function</li> <li>• Parameters</li> <li>• Codings</li> <li>• Automated mileage query</li> <li>• HV battery diagnostics BASIC</li> </ul>	<ul style="list-style-type: none"> <li>• Diagnostic port location</li> <li>• Component location</li> <li>• Reading/deleting trouble codes</li> <li>• Global check</li> <li>• DoIP/CAN FD technology</li> <li>• Service reset</li> <li>• Basic setting</li> <li>• Read OBFCM data***</li> <li>• Printout via e-mail</li> <li>• Cyber Security Management</li> <li>• Automatic VIN identification</li> <li>• Car History</li> <li>• Actuator test</li> <li>• Test function</li> <li>• Parameters</li> <li>• Codings</li> <li>• Automated mileage query</li> <li>• HV battery diagnostics BASIC</li> <li>• Proposed online solutionsbased on trouble codes</li> </ul>
<b>SERVICES &amp; DATA</b>		
	<ul style="list-style-type: none"> <li>• Send OBFCM data***</li> </ul>	<ul style="list-style-type: none"> <li>• Send OBFCM data***</li> <li>• Transfer of vehicle data to HGS Data****</li> <li>• Technical support via help call Flat</li> </ul>
<b>TECHNICAL HELP LINE (OPTIONAL)</b>		
	<ul style="list-style-type: none"> <li>• + 61 (0) 447 919 883</li> <li>• + 61 (0) 3 95819415</li> </ul>	<ul style="list-style-type: none"> <li>• + 61 (0) 447 919 883</li> <li>• + 61 (0) 3 95819415</li> </ul>
<b>HGS DATA ADD-ON (CAN BE BOOKED OPTIONAL)</b>		
		<ul style="list-style-type: none"> <li>• Access to HGS Data Web</li> </ul>

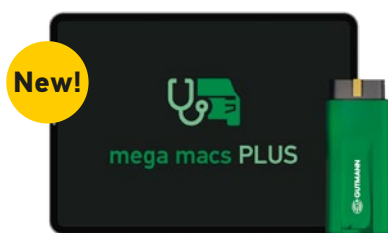
\* Corresponding software module required

\*\* Restrictions due to security gateway possible

\*\*\* OnBoard Fuel Consumption Monitoring

\*\*\*\* Precondition for the use of the function is an HGS Data access

## mega macs PLUS



Item no. 8PD 015 265-231

You can find the scope of performances of the different licence packages on page 13

### ALWAYS SUITABLE. ALWAYS UP-TO-DATE. ALWAYS RELIABLE.

As a reliable co-pilot in everyday workshop life, the mega macs PLUS combines the strengths of proven Hella Gutmann systems with a modernized, intuitive user interface. This makes day-to-day work in the workshop even faster, more convenient and more efficient. Thanks to seamless integration into workshop processes, compatibility with OEM systems and a flexible licence concept, the mega macs PLUS is the perfect choice for beginners, upgraders and converters alike – and is ideally prepared for the vehicles of today and tomorrow.

With the mega macs PLUS, the customers decide for themselves which scope of services they require – depending on their choice of licence level (PLUS 1, PLUS 2 or PLUS 3). Regardless of the selected version, Hella Gutmann regularly provides new updates on functions and vehicle coverage in the full version. Even after the licence has expired, central diagnostic functions such as trouble code reading and deletion, service reset, basic settings and global check remain available – without ongoing costs.

#### PRODUCT CHARACTERISTICS

- Use of existing Windows hardware (PC, laptop or tablet)
- Flexible licensing system
- Integration and direct transfer to HGS Data\*
- Innovative AI-help call function
- Comprehensive vehicle coverage and future-proof protocols
- Integrated Cyber Security Management
- Proposed online solutions based on trouble codes
- Performance of calibration work\*\*
- Scope of functions can be used also after the licence expiration
- Versatile
- Modernized software user interface for efficient operation
- And much more

#### BASIC DELIVERY CONTENTS

- HG-VCI PLUS
- USB cable (type C – type A)
- Safety instructions
- Lanyard
- Leaflet with installation link

#### HG-VCI MEGA MACS PLUS

Voltage OBD	8–32V DC
OBD current	Max. 350mA
USB voltage	5V DC
USB current	Max. 500mA
Outside temperature of work area	0 to +45 °C
Storage temperature	-20 to +60 °C
Dimensions	115,5 × 47,5 × 24 mm (L × B × H)
Weight	100g
Protection class	IP40
Frequency band	2400 to 2483.5 MHz (Bluetooth®)
Field intensity	11 dBm
Interfaces	Bluetooth® Classic, class 1, USB 2.0 hi-speed, type C-plug, CARB
Radio range	Inside: 3 to 10m, outside: up to max. 50m

#### SYSTEM REQUIREMENTS OF DISPLAY UNIT \*\*\*

Operating system	Windows 10 (64 bits) <b>IMPORTANT:</b> Support end 10/2025, Windows 11 (64 bits) recommended
Browser	Google Chrome, Microsoft Edge
Free hard disc space	10 GB
Working memory (RAM)	4 GB
Recommended display diagonal	At least: 8" / 1080i (1.920 × 1.080 px)
Processor (CPU)	X64, 2 cores
Interfaces	1 × USB 2.0, Bluetooth® Classic, class 1, Wi-Fi
System rights	The installation requires admin rights

#### SOFTWARE MEGA MACS PLUS

##### Diag-Module PLUS 1-WIN

Item no. 8PY 015 747-401

##### Diag-Module PLUS 2-WIN

Item no. 8PY 015 747-011

##### Diag-Module PLUS 3-WIN

Item no. 8PY 015 747-021

##### Upgrade Diag-Module PLUS-1 to 2-WIN

Item no. 8PY 015 747-081

##### Upgrade Diag-Module PLUS-1 to 3-WIN

Item no. 8PY 015 747-091

##### Upgrade Diag-Module PLUS-2 to 3-WIN

Item no. 8PY 015 747-101

#### LICENCES FOR THE MEGA MACS PLUS

##### Diag-Licence PLUS 1-WIN

Item no. 8PY 015 747-041

##### Diag-Licence PLUS 2-WIN

Item no. 8PY 015 747-051

##### Diag-Licence PLUS 3-WIN

Item no. 8PY 015 747-061

##### Licence HGS DATA ADD-ON

Item no. 8PY 015 270-751

\* Precondition for the use of the function is an HGS Data access

\*\* Precondition for that is an existing CSC-Tool

\*\*\* A display unit (laptop or PC) is not included in the delivery contents.

## Overview of mega macs PLUS licences

LICENCES MEGA MACS PLUS*		
Diag-Licence PLUS 1-WIN	Diag-Licence PLUS 2-WIN	Diag-Licence PLUS 3-WIN
FUNCTIONS		
<ul style="list-style-type: none"> <li>• Diagnostic connection position</li> <li>• Component localisation</li> <li>• Read/clear error code**</li> <li>• Total interrogation**</li> <li>• DoIP/CAN-FD technology</li> <li>• Service reset**</li> <li>• Basic settings**</li> <li>• Read OBFCM data***</li> <li>• Print via e-mail</li> </ul>	<ul style="list-style-type: none"> <li>• Diagnostic connection position</li> <li>• Component localisation</li> <li>• Read/clear error code</li> <li>• Total interrogation</li> <li>• DoIP/CAN-FD technology</li> <li>• Service reset</li> <li>• Basic settings</li> <li>• Read OBFCM data***</li> <li>• Print via e-mail</li> <li>• Cyber security management</li> <li>• Automatic VIN identification</li> <li>• Car history</li> <li>• Actuator test</li> <li>• Test functions</li> <li>• Parameters</li> <li>• Coding</li> <li>• Automated odometer reading query</li> <li>• HV battery diagnostics BASIC</li> </ul>	<ul style="list-style-type: none"> <li>• Diagnostic connection position</li> <li>• Component localisation</li> <li>• Read/clear error code</li> <li>• Total interrogation</li> <li>• DoIP/CAN-FD technology</li> <li>• Service reset</li> <li>• Basic settings</li> <li>• Read OBFCM data***</li> <li>• Print via e-mail</li> <li>• Cyber security management</li> <li>• Automatic VIN identification</li> <li>• Car History</li> <li>• Actuator test</li> <li>• Test functions</li> <li>• Parameters</li> <li>• Coding</li> <li>• Automated odometer reading query</li> <li>• HV battery diagnostics BASIC</li> <li>• Fault code based Online solution suggestions</li> </ul>
SERVICES & DATA		
	<ul style="list-style-type: none"> <li>• Send OBFCM data***</li> <li>• Transfer of vehicle data to HGS Data****</li> </ul>	<ul style="list-style-type: none"> <li>• Send OBFCM data***</li> <li>• Transfer of vehicle data to HGS Data****</li> <li>• Technical support via help call Flat</li> </ul>
TECHNICAL HOTLINE (OPTIONAL)		
	<ul style="list-style-type: none"> <li>• Call 15</li> <li>• Call 30</li> <li>• Call 50</li> </ul>	<ul style="list-style-type: none"> <li>• Call 15</li> <li>• Call 30</li> <li>• Call 50</li> </ul>
ACCESS HGS DATA WEB (OPTIONAL)		
	<ul style="list-style-type: none"> <li>• Access to HGS Data Web</li> </ul>	<ul style="list-style-type: none"> <li>• Access to HGS Data Web</li> </ul>

\* Corresponding Diag module required

\*\* Restrictions due to security gateway possible

\*\*\* OnBoard Fuel Consumption Monitoring

\*\*\*\* HGS Data access is required to use the function

## mega macs PC SE



**Hardware package mega macs PC SE**  
Item no. 8PD 010 606-801

**Basic software PC SE**  
Item-no. 8PY 015 745-941

### THE DIAGNOSIS UPGRADE FOR YOUR WINDOWS WORKSHOP PC

mega macs PC SE is the Windows-based diagnostics solution which offers workshops a comprehensive range of services at a very attractive price. It includes features like the precise diagnosis of trouble codes, clear display of important parameters, functional testing of ECUs, adaptation of vehicle functions and easy execution of maintenance work and service resets. State-of-the-art communication protocols such as DoIP and CAN-FD guarantee excellent vehicle communication.

With the mega macs PC SE, workshops not only retain maximum compatibility and flexibility, but by using their own Windows device\* (tablet, laptop, etc.) they also save money.

From vehicle service to ADAS calibration, the mega macs PC SE offers a wide range of applications – all in one device. For an even more efficient and precise diagnosis, the mega macs PC SE offers access to technical data and – depending on the licence – access to, background information, component help, service and timing belt data as well as wiring diagrams. In addition, they can profit from the technical support from the Hella Gutmann Service Center.

#### PRODUCT CHARACTERISTICS

- Diagnosing vehicles with DoIP/CAN-FD protocol
- Reading and deleting trouble codes in all control units
- Graphical parameter representation with explanations (8 parameters)
- Actuator test
- Service reset of all systems
- Codings and Basic setting
- Wireless communication
- Fast and accurate vehicle identification via VIN
- Full scope of technical data and diagnostics in a single solution\*\*
- Integrated wiring diagrams, fuses/relays, flat rate units, timing belt data, etc.\*\*
- Regular updates\*\*\*
- And much more

#### BASIC DELIVERY CONTENTS

- HG-VCI PC
- Pen drive for software installation
- Remote adapter
- USB cable for connecting HG-VCI to PC
- Safety instructions

### SYSTEM REQUIREMENTS

Minimum	Microsoft Windows 10 (32/64 bits) or higher
Hardware	<ul style="list-style-type: none"> <li>• 512 MB RAM</li> <li>• 2 GB hard disc space</li> <li>• Min. 1 free USB port</li> <li>• Screen resolution min. 800 × 600 px</li> </ul>

### HG-VCI PC

Dimensions	115.5 × 47.5 × 24 mm (L × W × H)
Interfaces	<ul style="list-style-type: none"> <li>• Bluetooth® Classic, Class 1</li> <li>• USB 2.0 Hi-Speed, Type C</li> <li>• CARB</li> </ul>
Operating range indoors	3 – 10 m
Operating range outdoors	Max. 50 m
Frequency band	2400 – 2483.5 MHz (Bluetooth®)
Voltage OBD	8 – 32 V DC
Current OBD	Max. 350 mA
Voltage USB	5 V DC
Current USB	Max. 500 mA
Weight	100 g
Protection class	IP40
Field intensity	11 dBm
Storage temperature	-20 to +60 °C
Temperature of work area	0 to 45 °C

\* Only on Windows-based systems/devices (except RT)  
\*\* Available with Repair Plus Light licence  
\*\*\* Available with Update Plus licence

# Equipment for vehicle diagnostics

## MEASUREMENT MODULES & DOCKING STATIONS



**Measurement module MT 77**  
incl. cables  
Item no. 8PZ 010 614-291



**Measurement module MT 56**  
(and the mega macs 56 Bike) incl. cables  
Item no. S40210



**Clamp meter blue,**  
0–700 A  
Item no. 342439



**Clamp meter green,**  
0–40 A  
Item no. 8PZ 010 614-141



**Docking station for the mega macs 77**  
or mega macs 77 VARIO  
Item no. 8PZ 010 606-391



**Charging station for mega macs 56**  
Item no. 8PZ 010 606-231



**Docking station Hella Gutmann-Tablet SE**  
Item no. 8PZ 015 266-691

## PASSENGER CAR ADAPTER PLUGS



**VAG (Audi/VW/SEAT/Skoda)**  
VOL01 2+1  
Item no. 8PZ 010 603-001



**BMW**  
BMW01a 20  
Item no. 8PZ 010 603-011



**Iveco**  
IVE01 38  
Item no. 8PZ 010 603-771



**Mercedes-Benz**  
MER02 38  
Item no. 8PZ 010 603-081



**Mercedes-Benz/VW (Sprinter/LT)**  
MER04 14  
Item no. 8PZ 010 614-121



**Nissan**  
NIS01 14  
Item no. 8PZ 010 603-101



**Opel**  
OPE01a 10  
Item no. 8PZ 010 603-111



**OBD cable extension\***  
1.500 mm  
Item no. 8PZ 010 606-721



**Tesla\*\***  
TES01 CAN (for Tesla connector X179)  
Item no. 8PZ 010 613-451



**12V adapter for voltage supply,**  
suitable e.g. for TES01  
Item no. 8PZ 010 604-981

## CARRY CASE



**mega macs X carry case SE**  
Item no. 8PZ 015 266-411



**Carry case for the MT-HV**  
Item no. 8PZ 015 266-151



**Carry case for the mega macs 77, mega macs 77 VARIO or mega macs 56**  
Item no. 8PZ 010 606-561

## IT ACCESSORIES



**USB-Wireless adapter**  
Version 3  
Item no. 8PZ 010 614-091



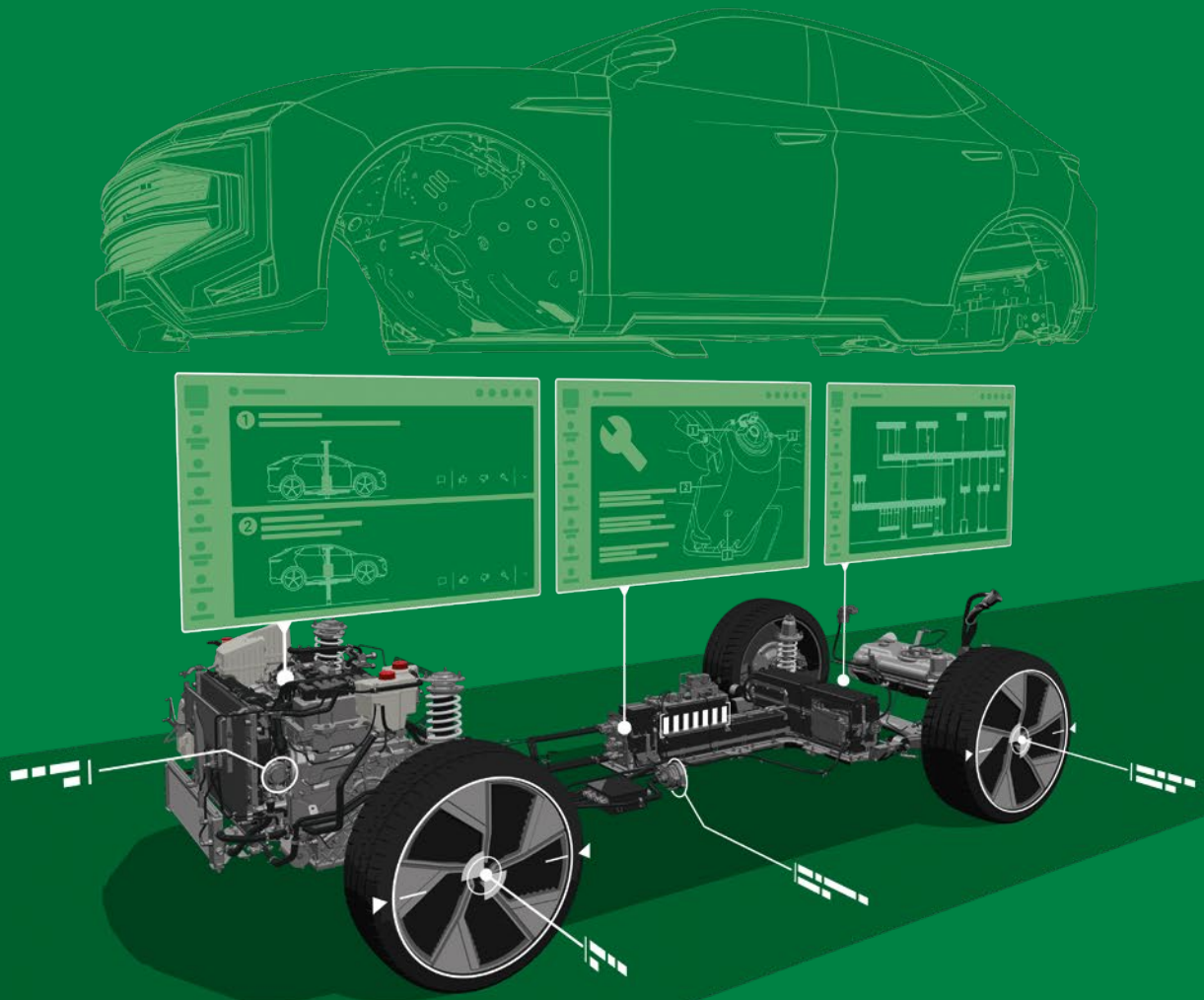
**Adapter USB type-C™ to HDMI®**  
for Hella Gutmann Tablet SE for external image transmission  
Item no. 8PZ 015 266-681

\* Not in combination with the mega macs X (does not work with DoIP and CAN-FD vehicles)

\*\* For the voltage supply, the 12 V adapter item no. 8 PZ 010 604-981 is required

# The Seamless Digital Addition

Service Solutions by Hella Gutmann



Our service products provide direct access to the comprehensive diagnostic and repair database of Hella Gutmann. Alternatively, bring your digital service assistant directly into your workshop.

# Digital Services

## HGS DATA



### DATA FLAT RATE FOR OVER 35,000 VEHICLE MODELS

HGS Data is your indispensable, interactive knowledge database. It is one of the largest databases in the world and pays off from the very first day. HGS Data provides quick and direct access to vehicle data, technical information and of course many useful tips and tricks that our experts have collected from hundreds of thousands of support requests and solutions. This is how everyone in the large Hella Gutmann family helps each other.

#### Repair Plus Light stand alone

The online portal for anyone without a Hella Gutmann diagnostic device – technical data, background knowledge & solutions for all relevant vehicle data (two online accesses)  
Item no. 8PY 010 609-491

#### Repair Plus Light stand alone

Item no. 8PY 010 609-501

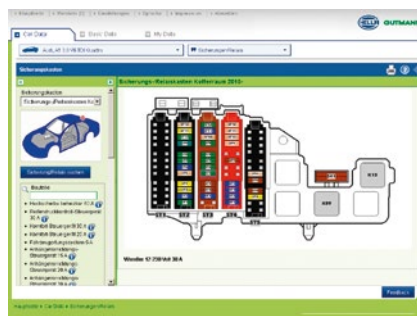
#### ADVANTAGES AT A GLANCE

- Up-to-the-minute technical data
- Many practice-oriented tips and tricks
- Service schedules of all important brands

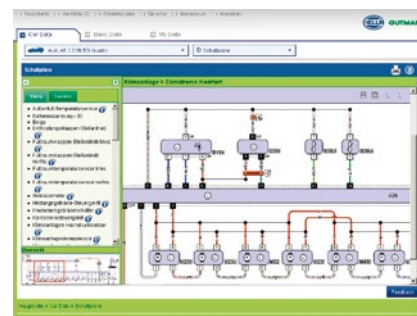
#### PRODUCT CHARACTERISTICS

- Symptom-based troubleshooting
- Parts dialogue with information on the selected part
- E-mail cloud for maintaining the requests
- All recall campaigns at a glance
- Overview of the last 10 processed vehicles\*
- Technical data on more than 35,000 models
- Service schedules of all important brands
- Colored wiring diagrams in pin-sharp resolution
- Fuse/relay box images
- Component test values with additional information
- And much more

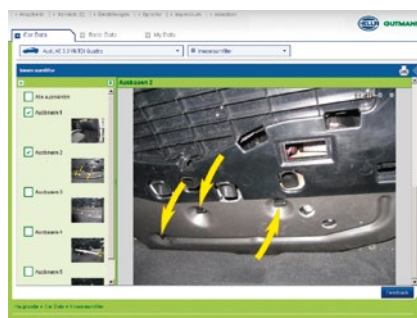
HGS Data is included in a RepairPlus licence or in the scope of delivery of mega macs X (starting from SDI X<sup>2</sup>)\*\*.



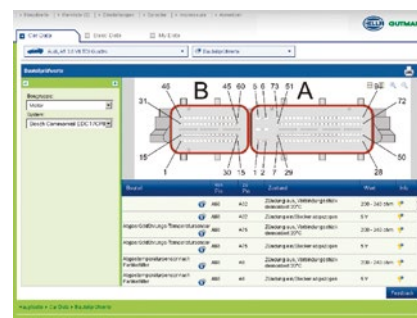
Relay box images



Wiring diagrams



Engine compartment images

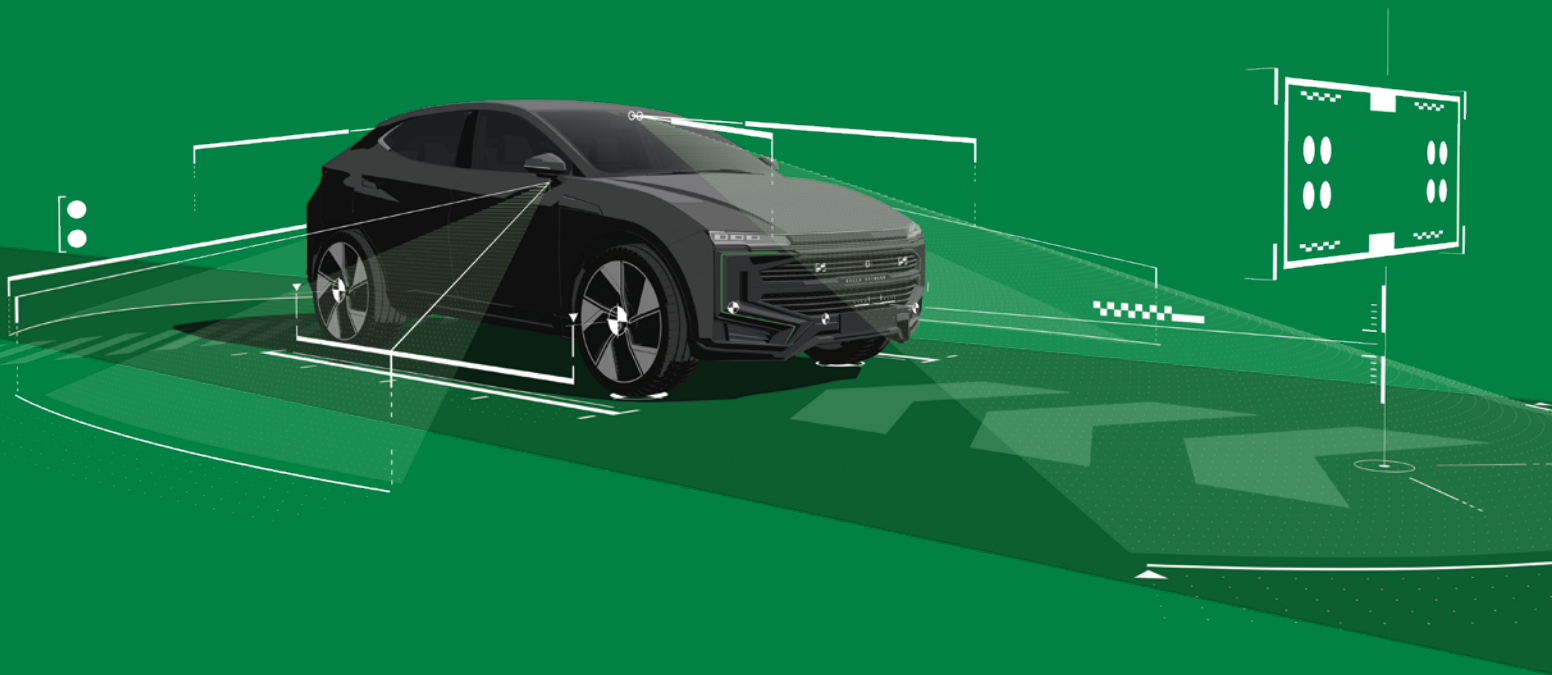


Component test values

\* If the licence plate number of the vehicle was entered.  
\*\* Depends on the country

# Maximum safety on the road –

## ADAS calibration and adjustment



Numerous radar and camera-based technologies such as emergency brake assistant, emergency lane-keeping system, intelligent speed assistance or reversing aid, are working to increase driver safety.

The majority of modern vehicles are equipped with this technology, which is only becoming more prevalent. The precise calibration of these systems is essential – for the road safety and for the quality of your work.

More information



# Calibration of front camera and sensors

## CSC-Tool PRO



Item no. 8PD 015 271-421

### ADAS CALIBRATION RE-DEFINED

Ten years after the development of the first calibration system Hella Gutmann sets new standards: The fully digital CSC-Tool PRO is the modular solution for a precise calibration of modern advanced driver assistance systems. Thanks to the entirely guided and documented procedure, every calibration process becomes efficient, secure and transparent.

The system projects digital OE-conformal camera reference panels in original size onto a 86" display – it is currently comprising 21 reference panels, including XXL versions for makes such as Honda or Iveco. The integration into the daily's work in shops is no problem thanks to the cloud connectivity and seamless communication with the mega macs X, S 20 or PLUS.

Automated functions such as the digital height admeasurement and real-time correction indications support the user step-by-step. The optional suspension Pre-Check verifies the axle geometry in advance – without additional time investment. A compact design, 3D camera technology and an integrated touch panel PC complete the full package. Hence the CSC-Tool PRO is the future-proof response to the increasing demands in the field of ADAS calibration.

### ADVANTAGES AT A GLANCE

- Continuous procedure, entirely documented
- Calibration data from the cloud on a daily basis
- Quality feature suspension PreCheck
- Real-time depictions for easy operation
- Data integration with the mega macs X and the mega macs S 20 / PLUS
- Semi-automated alignment:  
Precise and efficient
- Digital concept with movable 86" monitor (also for reference panels in special sizes such as for Iveco)
- Complete documentation and extended options
- Independent usage
- Efficient support by Remote Service Case possible

### DELIVERY CONTENTS

- 1 × Base frame incl. lifting cylinder, camera bar and 13.3-inch touch panel PC
- 1 × 86-inch monitor
- 1 × USB wireless adapter (Wi-Fi & Bluetooth®)
- 1 × Laser distance meter
- 1 × Laser distance meter mount
- 1 × Stop protector vehicle front
- 1 × Safety instructions

### REQUIREMENT

- CSC-Tool wheel clamp rim set or
- CSC-Tool wheel clamp combi set
- Cali-Licence PRO 1

On **page 21** you can experience which licence model is the best for your shop

### LICENCES FOR THE CSC-TOOL PRO

#### CALI-LICENCE PRO 1 HIGH MACS

Item no. 8PY 015 746-861

#### CALI-LICENCE PRO 1 LOW MACS

Item no. 8PY 015 746-871

#### CALI-LICENCE PRO 1 NO MACS

Item no. 8PY 015 746-881

#### CALI-LICENCE PRO 2 ADD-ON FREE

Item no. 8PY 015 746-891

#### CALI-LICENCE PRO 2 ADD-ON

Item no. 8PY 015 746-901

## CSC-Tool wheel clamp rim set

---



Our wheel clamps for rim mounting enable precise and direct alignment thanks to their secure connection to the rim.

### ADVANTAGES AT A GLANCE

- Assembly possible regardless of tire size and body position
- In combination with the integrated 3D camera system the 3D panels enable the guided alignment and check of the axle geometry (suspension PreCheck)

### DELIVERY CONTENTS

- 4 × Wheel clamp rim
- 4 × 3D panel

---

Item no. 8PD 015 271-511

---

## CSC-Tool wheel clamp combi set

---



The CSC Tool wheel clamp combi combines maximum precision with practice-oriented handling – powered by HAWEKA.

### ADVANTAGES AT A GLANCE

- In combination with the integrated 3D camera system the 3D panels enable the guided alignment and check of the axle geometry (suspension PreCheck)
- Variable construction, can be used for different rim and tire sizes
- Special protection of the rims

### DELIVERY CONTENTS

- 4 × Wheel clamp combi (powered by HAWEKA)
- 4 × 3D panel

---

Item no. 8PD 015 271-521

---

A runout compensation (rim runout compensation) is always part of the calibration process with the CSC-Tool PRO for every wheel clamp version.

## Overview of licence scope for the CSC-Tool PRO

LICENCES FOR CSC-TOOL PRO				
MANDATORY LICENCE			ADD-ON LICENCE*	
Cali-Licence PRO 1			Cali-Licence PRO 2	
High macs	Low macs	No macs	Add-on free	Add-on
<ul style="list-style-type: none"> <li>• For mega macs X customers with an active X<sup>2</sup>/X<sup>3</sup>/X<sup>4</sup> licence**</li> <li>• For mega macs S20 customers with an active S<sup>2</sup>/S<sup>3</sup> licence**</li> <li>• For mega macs PLUS customers with an active PLUS 2/PLUS 3 licence**</li> <li>• For mega macs customers with an active Update Plus licence**</li> </ul>	<ul style="list-style-type: none"> <li>• For mega macs X customers with an active X<sup>1</sup> licence**</li> <li>• For mega macs S20 customers with an active S<sup>1</sup> licence**</li> <li>• For mega macs PLUS customers with an active PLUS 1 licence**</li> </ul>	<ul style="list-style-type: none"> <li>• For customers who do not have an active Hella Gutmann diagnostic licence**</li> </ul>	<ul style="list-style-type: none"> <li>• For mega macs X customers with an active X<sup>4</sup> licence**</li> </ul>	<ul style="list-style-type: none"> <li>• For mega macs X customers with an active X<sup>1</sup>/X<sup>2</sup>/X<sup>3</sup>/X<sup>4</sup> licence**</li> <li>• For mega macs S 20 customers with an active S<sup>1</sup>/S<sup>2</sup>/S<sup>3</sup> licence**</li> <li>• For mega macs PLUS customers with an active PLUS 1/PLUS 2/PLUS 3 licence**</li> </ul>

### FEATURES

<ul style="list-style-type: none"> <li>• <b>Device software (CALI-OS)</b></li> <li>• <b>Guided positioning process</b> <ul style="list-style-type: none"> <li>• Vehicle selection</li> <li>• Component preparation</li> <li>• Guided tool positioning</li> <li>• Guided component positioning</li> <li>• Wheel arch edge measurement</li> <li>• Individualised alignment</li> <li>• Logging</li> </ul> </li> <li>• <b>Component manager</b></li> <li>• <b>Car history</b></li> <li>• <b>User-controlled positioning</b></li> <li>• <b>Compensation run</b></li> <li>• <b>Chassis PreCheck Status</b></li> </ul>	<ul style="list-style-type: none"> <li>• <b>Device software (CALI-OS)</b></li> <li>• <b>Guided positioning process</b> <ul style="list-style-type: none"> <li>• Vehicle selection</li> <li>• Component preparation</li> <li>• Guided tool positioning</li> <li>• Guided component positioning</li> <li>• Wheel arch edge measurement</li> <li>• Individualised alignment</li> <li>• Logging</li> </ul> </li> <li>• <b>Component manager</b></li> <li>• <b>Car history</b></li> <li>• <b>User-controlled positioning</b></li> <li>• <b>Compensation run</b></li> <li>• <b>Chassis PreCheck Status</b></li> <li>• <b>Guided Calibration Process</b> <ul style="list-style-type: none"> <li>• Compensation run</li> <li>• Chassis PreCheck analysis</li> <li>• Fine adjustment of digital calibration charts</li> </ul> </li> <li>• <b>Connection to SDI diagnostic device</b> <ul style="list-style-type: none"> <li>• VIN identification</li> <li>• System detection</li> <li>• Reading/deleting error codes</li> <li>• Performing calibration</li> <li>• Extended logging</li> </ul> </li> </ul>
---	--

### DATA & SERVICES

<ul style="list-style-type: none"> <li>• <b>Digital calibration targets</b></li> <li>• <b>Vehicle database</b></li> <li>• <b>Continuous software updates</b></li> <li>• <b>User and workshop identification</b></li> <li>• <b>Flexible information display</b></li> <li>• <b>Remote maintenance access</b></li> </ul>	<ul style="list-style-type: none"> <li>• <b>Digital calibration targets</b></li> <li>• <b>Vehicle database</b></li> <li>• <b>Continuous software updates</b></li> <li>• <b>User and workshop identification</b></li> <li>• <b>Flexible information display</b></li> <li>• <b>Remote maintenance access</b></li> <li>• <b>Setpoints Chassis PreCheck</b></li> </ul>
---	--

\* Only in conjunction with Cali-Licence PRO 1

\*\* Please note that the basic requirements defined above apply when selecting licences for the CSC-Tool PRO. Subsequent changes to or termination of the active Hella Gutmann diagnostic licence may affect the contract term and price of the existing CSC-Tool PRO licence.

## CSC-Tool SE



Item no. 8PD 015 269-101

### THE ASSISTANT FOR ADVANCED DRIVER ASSISTANCE SYSTEMS

Numerous improvements of the CSC-Tool SE (Second Edition) provide easier handling and extend the fields of applications and save time. It is furthermore prepared for the optional connection to an analog wheel alignment measurement system.

#### ADVANTAGES AT A GLANCE

- One person only required for spring-supported height adjustment of the cross member
- Option to adjust to different camera and radar systems
- Base support with recesses for extremely low positioning of the angular adjustment plate
- Upgradeable at any time
- Documentation of adjustment/calibration as hard-copy printout and in the Car History
- Excellent measuring accuracy
- Compatible with the diagnostic devices of the mega macs family

#### BASIC DELIVERY CONTENTS

- 1 × Base frame incl. VAG Group reference panel
- 1 × Cross member
- 2 × Base support with caster wheels
- 1 × Measuring rod (2,000 mm)
- 1 × Mounting kit

#### PRECONDITION

- Reference panels
- Wheel clamp SE (front camera calibration) or wheel clamp module (wheel alignment measurement)

## Wheel clamp modules SE



Item no. 8PZ 015 269-131

The wheel clamp modules SE are precondition for the centered and parallel positioning of the CSC-Tool SE/CSC-Tool Digital in front of the vehicle.

#### ADVANTAGES AT A GLANCE

- Fast positioning of the CSC-Tool SE/CSC-Tool Digital in front of the vehicle
- Center and align the tool parallel to the rear axle just in a few steps thanks to the green line laser
- Great ease of use

#### BASIC DELIVERY CONTENTS

- 2 × Wheel clamp module SE with line laser

The wheel clamp modules SE are a **precondition** for performing calibrations

# Mobile calibration of front camera and sensors

## CSC-Tool Mobile



Item no. 8PD 010 624-001

### CALIBRATION "TO GO"

The calibration solution CSC-Tool Mobile opens new opportunities for mobile roadside assistance, glass repair services, service providers for transport fleets and associated workshops. Hence, the mobile version also corresponds to the most stringent manufacturer specifications – provided that the setup area is level.

### ADVANTAGES AT A GLANCE

- Sturdy, compact and easy to transport (e. g.: in minivan or van)
- Safe transport in wooden multipurpose packaging
- Can be assembled and disassembled by one person
- Multibrand solution

### BASIC DELIVERY CONTENTS\*

- Mobile base support
- Insertable top frame
- Cross member with extendable mirrors
- Measuring rod (1800 mm)
- Mounting set
- Wheel alignment module (2 pieces)
- Socket wrench

### OPTIONAL ACCESSORIES

- Lock detent pawl for fixing the cross member to the base frame (see accessories **page 34**)

### REQUIREMENTS

- Reference panels

\* Reference panels are not part of the basic delivery contents

# Calibration of rearview and all-round vision camera

## REAR CAM KIT I – BASIC

Together with the mega macs software, the Rear Cam Kits I+II enable the exact calibration of all-round vision camera systems and rearview cameras. According to the manufacturer's specifications, these cameras must also be aligned exactly to the vehicle's thrust line (rear axle). The kits are accessories of the various CSC-Tools and include a multipiece reference panel system in frame structure (Rear Cam Kit I – Basic & Addition) and several roll-out reference mats (Rear Cam Kit II – Side).

### Rear Cam Kit I – Basic Profile



Item no. 8PZ 010 611-601

The Rear Cam Kit I – Basic Profile is also required for the alignment during radar sensor calibration (Radar Kit III + radar reflector CSC 4-06, **pages 28+ 29**).

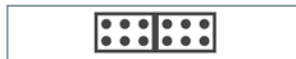
#### ADVANTAGES AT A GLANCE

- Currently, it is possible to calibrate the rearview cameras in various models of **VW, Audi, Seat, Skoda, Mercedes Benz, Nissan, CUPRA, MAN & Porsche**. For details please refer to the current list of covered vehicles ([www.hella-gutmann.com](http://www.hella-gutmann.com))
- Manufacturer list and model range can be extended
- An even surface is sufficient for calibrating camera systems
- Multibrand solution (can be extended at any time)

#### DELIVERY CONTENTS

- 2 × Base support (2 pieces)
- 2 × Slide
- 2 × Tape measure with holder
- 4 × Mounting bolts
- 2 × Stabilizing plate

### Rear Cam Kit I – Basic Mercedes-Benz + VAG reference panel set



VAG reference panel CSC 2-01



Mercedes-Benz reference panel CSC 2-02

#### DELIVERY CONTENTS

- 1 × VAG reference panel CSC 2-01
- 1 × Mercedes-Benz reference panel CSC 2-02

#### REQUIREMENT

- Rear Cam Kit I – Basic Profile
- Wheel clamp module

Item no. 8PZ 010 611-691

## Rear Cam Kit I – Basic Nissan reference panel set



Nissan reference panel CSC 2-03



Nissan reference panel CSC 2-04



Nissan reference panel CSC 2-05

### DELIVERY CONTENTS

- 1 × Nissan reference panel CSC 2-03
- 1 × Nissan reference panel CSC 2-04
- 1 × Nissan reference panel CSC 2-05

### REQUIREMENT

- Rear Cam Kit I – Basic Profile
- Wheel clamp module

Item no. 8PZ 010 611-971

## Rear Cam Kit I – Addition Profile



### DELIVERY CONTENTS

- 2 × Reference panel fastening profile
- 2 × Mounting set for reference panel

### REQUIREMENT

- Rear Cam Kit I – Basic Profile
- Rear Cam Kit I – reference mat VAG

Item no. 8PZ 010 611-611

## Rear Cam Kit I – Addition VAG reference panel set (CSC 3-01)



VAG reference panel CSC 3-01

### DELIVERY CONTENTS

- 2 × VAG reference panel 3-01

### REQUIREMENT

- Rear Cam Kit I – Basic Profile
- Rear Cam Kit I – reference mat VAG
- Rear Cam Kit I – Additional Profile

Item no. 8PZ 010 611-681

Rear Cam Kit I+II can only be used in connection with a product of the **CSC-Tool family** or a wheel clamp module set and a **diagnostic device of Hella Gutmann Solutions**

## REAR CAM KIT II – SIDE

All-round vision camera systems are calibrated with the help of the roll-out reference mats. The space-saving mats are robust and can be walked on. The product range is being expanded continuously.

### Rear Cam Kit II – Side VAG reference mat set (CSC 3-02)



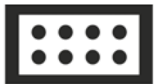
VAG reference panel CSC 3-02

#### DELIVERY CONTENTS

- 2 × VAG reference mat CSC 3-02
- 4 × End rail

Item no. 8PZ 010 611-621

### Rear Cam Kit II – Side Mazda reference mat set (CSC 3-03)



Mazda reference mat set CSC 3-03

#### DELIVERY CONTENTS

- 2 × Mazda reference mat CSC 3-03
- 4 × End rail

Item no. 8PZ 010 624-931

### Rear Cam Kit II – Side Mitsubishi reference mat set (CSC 3-05)



Mitsubishi reference mat set CSC 3-05

#### DELIVERY CONTENTS

- 2 × Mitsubishi reference mat CSC 3-05
- 4 × End rail

Item no. 8PZ 010 624-901

Rear Cam Kit I+II can only be used in connection with a product of the **CSC-Tool family** or a wheel clamp module set and a **diagnostic device of Hella Gutmann Solutions**

# Calibration of radar sensors

The CSC-Tool PRO provides two practice-oriented options for the calibration of radar sensors – adapted for different, spatial shop requirements or vehicle types. In this way you can efficiently calibrate existing radar systems and also precisely adjust new vehicle generations. Depending on your individual demands you have the choice between an integrated adapter version for the well-proven Radar Kit I EVO or the stand alone Radar-Tool. Both versions are adapted for the digital process guidance of the CSC-Tool PRO and ensure maximum precision with minimum effort.

## Radar-Tool



### ADVANTAGES AT A GLANCE

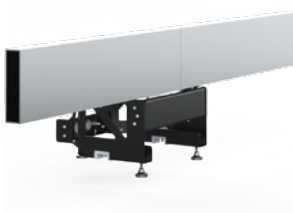
- Free-standing movable radar tool
- Precise angular adjustment along the X- and Z-axis according to OEM specification
- Positioning with the help of 3D technology of the CSC-Tool PRO
- Developed for new radar systems (e.g. BMW)

### DELIVERY CONTENTS

- 1 × Radar-Tool
- 2 × 3D panel

Item no. 8PZ 015 273-511

## System adapter



### ADVANTAGES AT A GLANCE

- Use of the existing Radar-Kit I EVO and corresponding radar equipment possible
- Compatible with the digital control of the CSC-Tool PRO
- Cost-efficient solution for existing Hella Gutmann users
- This compact solution has a minimal space requirement

### DELIVERY CONTENTS

- 1 × System adapter for attachment to the CSC-Tool PRO

Item no. 8PZ 015 273-501

## Radar Kit I EVO (CSC 4-01 EVO)



Today, many service and repair tasks also entail the calibration of the radar system. These include collision repair work, wheel or camber adjustment, the addition of ride height altering components to the suspension system or a standard service task such as a lock carrier having been set to maintenance position (e.g. during timing belt replacement). All these tasks require system calibration. With the Radar Kit I EVO, you can calibrate radar sensors at almost any height. This gives the CSC-Tool and all its versions the necessary flexibility. An essential part of this new tool is the ingenious system mount which allows continuously variable vertical movement, e.g. of the angular adjustment plate and of the new reference panel for laser sensor calibration on the latest Audi models.

Item no. 8PZ 010 611-981

**Angular adjustment plate EVO**  
Item no. 8PZ 010 624-941

**System mount**  
Item no. 8PZ 010 624-951

### ADVANTAGES AT A GLANCE

- Vertical, continuously variable movement of angular adjustment plate
- Compatible with all versions of the CSC-Tool
- The system mount is the basis for future ADAS hardware extensions.
- Adjustment of angular plate via a simple rotary cam

### BASIC DELIVERY CONTENTS FOR RADAR KIT EVO

- System mount
- Angular adjustment plate EVO

## Radar Kit II (CSC 4-03)



Radar Kit II for calibrating the radar sensors from Mercedes-Benz (radar sensors without mirrors).

Item no. 8PZ 010 611-251

### BASIC DELIVERY CONTENTS

- Case
- Mirror adjustment device with vacuum bell
- Centering ring for vehicles as from 2004
- Centering ring for E-Class
- Manual vacuum pump
- Adjustment tool
- Vaseline

### REQUIREMENTS

- Radar Kit I or Radar Kit I EVO
- Magnetic laser (see accessories **page 34**)

## Radar Kit III (CSC 4-04 + CSC 4-05)



The Radar Kit III consists of a rotating base with a glass-fiber reinforced plastic rod, a laser module and 2 radar reflectors. The kit is designed for calibrating front and rear radar sensors. For this purpose, different radar reflectors are used depending on the manufacturer.

Item no. 8PZ 015 269-051

### BASIC DELIVERY CONTENTS

- 1 × CSC 4-04 radar reflector
- 1 × CSC 4-05 radar reflector
- 1 × Base incl. glass-fiber reinforced plastic rod
- 1 × Laser module

### REQUIREMENTS

- Rear Cam Kit I – Basic Profile
- Wheel alignment module
- Positioning aid for radar reflector if needed

## Radar reflector (CSC 4-06)

---



Item no. 8PZ 015 269-001

---

With the CSC 4-06 radar reflector the radar sensors of systems such as lane change assist and blind spot monitoring are calibrated regardless of the manufacturer. The CSC 4-06 radar reflector is adapted to the Rear Cam Kit I – Basic & Addition which is already included in the product portfolio.

### BASIC DELIVERY CONTENTS

- 1 × CSC 4-06 Radar Reflector
- 1 × Power adapter
- 1 × Operating instructions

### REQUIREMENT

- Rear Cam Kit I – Basic Profile
- Rear Cam Kit I – Addition Profile
- Rear Cam Kit I – reference mat VAG

## Radar reflector (CSC 4-07)

---



Item no. 8PZ 015 269-061

---

Adjustment of rear radar sensors on Mitsubishi vehicles. The radar reflector CSC 4-07 serves as extension of the Radar Kit III.

### BASIC DELIVERY CONTENTS

- 1 × CSC 4-07 radar reflector
- 1 × Operating instructions

### REQUIREMENT

- Radar Kit III
- Positioning aid for radar reflector
- Rear Cam Kit I – Basic profile

## Positioning aid for radar reflector

---



Item no. 8PZ 015 269-041

---

Together with the trusted Rear Cam Kit I – Basic Profile the radar reflector positioning aid allows for exact positioning of the CSC 4-04/4-05/4-07 radar reflectors in the course of rear radar sensor calibration depending on the manufacturer.

### BASIC DELIVERY CONTENTS

- 1 × Positioning aid

### REQUIREMENTS

- Rear Cam Kit I – Basic Profile
- Radar Kit III

# Calibration of laser sensors

## Reference panel for laser sensor (CSC 5-01)



Item no. 8PZ 010 624-961

**ADVANTAGES AT A GLANCE**

- Continuously variable, vertical movement possible
- Compatible with all previous versions of the CSC-Tool
- Calibration of the laser scanner in the latest Audi models

**BASIC DELIVERY CONTENTS**

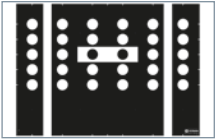
- Reference panels for laser sensor CSC 5-01

**REQUIREMENT**

- System mount

# Reference panels for camera calibration

To calibrate the camera system of a vehicle according to manufacturer’s specifications, the CSC-Tool and the CSC-Tool SE require brand-specific reference panels. The same number of reference panels is available for the CSC-Tool Mobile. These differ in size to the panels for the CSC-Tool and or CSC-Tool SE and some can be folded to max. 100 × 50 cm.



**VAG Group**  
Basic delivery contents  
8PZ 010 624-011 (M-01)



**Mercedes-Benz, Volvo, Polestar, VW**  
8PD 010 601-901 (1-02)  
8PZ 010 624-021 (M-02)



**Renault, Smart**  
8PZ 010 607-951 (1-03)  
8PZ 010 624-031 (M-03)



**Nissan, Mercedes-Benz**  
8PZ 010 607-961 (1-04)  
8PZ 010 624-041 (M-04)



**Kia, Hyundai, Alfa Romeo, Peugeot, Citroen, DS Automobiles, Fiat, Jeep, Opel**  
8PZ 010 607-971 (1-05)  
8PZ 010 624-051 (M-05)



**Honda**  
8PZ 010 607-981 (1-06)  
8PZ 010 624-061 (M-06)

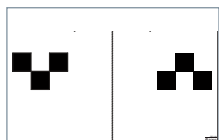


**Mazda**  
8PZ 010 607-991 (1-07)  
8PZ 010 624-071 (M-07)

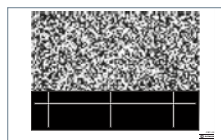


**Toyota, Lexus**  
8PZ 010 611-181 (1-08)  
8PZ 010 624-081 (M-08)

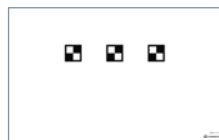
(M) = CSC-Tool Mobile



**Honda**  
8PZ 010 611-451 (1-09)  
8PZ 010 624-091 (M-09)



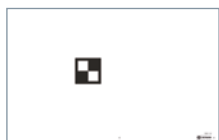
**Subaru**  
8PZ 010 611-461 (1-10)  
8PZ 010 624-101 (M-10)



**Toyota, Lexus, Peugeot,  
Citroen, Suzuki**  
8PZ 010 611-471 (1-11)  
8PZ 010 624-111 (M-11)



**Mazda**  
8PZ 010 611-631 (1-12)  
8PZ 010 624-121 (M-12)



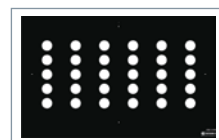
**Toyota, Lexus**  
8PZ 010 611-641 (1-13)  
8PZ 010 624-131 (M-13)



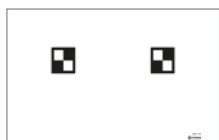
**Toyota**  
8PZ 010 611-651 (1-14)  
8PZ 010 624-141 (M-14)



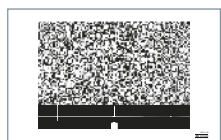
**Honda**  
8PZ 010 611-831 (1-15)  
8PZ 010 624-151 (M-15)



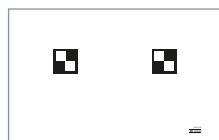
**Alfa Romeo**  
8PZ 010 611-841 (1-16)  
8PZ 010 624-161 (M-16)



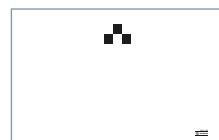
**Mitsubishi**  
8PZ 010 611-881 (1-17)  
8PZ 010 624-171 (M-17)



**Suzuki**  
8PZ 010 611-911 (1-18)  
8PZ 010 624-181 (M-18)



**Suzuki**  
8PZ 010 611-921 (1-19)  
8PZ 010 624-191 (M-19)



**Hyundai**  
8PZ 010 611-931 (1-20)  
8PZ 010 624-201 (M-20)



**IVECO**  
8PZ 015 270-341 (1-21)  
8PZ 015 270-331 (M-21)  
Requirement for CSC-Tool-Digital:  
Target holder (8PZ 010 624-271)

(M) = CSC-Tool Mobile

# Optional accessories for the CSC-Tool

## Front Camera Calibration Aid KIA/Hyundai



A special tool is required for various KIA/Hyundai vehicle models to calibrate the front camera, whereby the tool is mounted directly on the engine hood.

**PRODUCT CHARACTERISTICS**

- Front camera leveling compliant with the specifications of the manufacturer is a basic requirement for calibration
- Easy handling

**BASIC DELIVERY CONTENTS**

- Front Camera Calibration Aid KIA/Hyundai

Item no. 8PZ 015 269-921

## Front Radar Levelling Aid Volvo



A special adjustment tool for basic setting/leveling is required before the dynamic calibration of the radar sensor on certain Volvo models.

**PRODUCT CHARACTERISTICS**

- Sensor adjustment with the help of manufacturer compliant positioning tools is the basic precondition for calibrations
- Easy handling

**BASIC DELIVERY CONTENTS**

- Front Radar Levelling Aid Volvo

Item no. 8PD 010 624-991

## Front Camera Levelling Aid Volvo



A special adjustment tool is required for the front camera calibration on certain Volvo models. Prior to the dynamic camera calibration, a basic adjustment of the camera must be carried out with a positioning tool compliant with the specifications of the manufacturer such as the Front Camera Leveling Aid from Hella Gutmann.

**PRODUCT CHARACTERISTICS**

- Front camera leveling compliant with the specifications of the manufacturer is a basic requirement for calibration
- Easy handling

**BASIC DELIVERY CONTENTS**

- Front Camera Levelling Aid Volvo

Item no. 8PD 010 611-991

## System adapter for VAG night-vision calibration tool VAS 6430/6

---



Item no. 8PZ 010 624-891

The system adapter serves for mounting the original VAG night-vision calibration tool VAS 6430/6\* to the Hella Gutmann system mount in combination with all the current CSC-Tool versions of Hella Gutmann.

### BASIC DELIVERY CONTENTS

- System adapter

### REQUIREMENT

- System mount
- VAG night-vision calibration tool VAS 6430/6

## Wheel clamp module "Control"

---



Item no. 8PZ 010 611-411

### PRODUCT CHARACTERISTICS

- With the wheel clamp module "Control", it is possible to measure the toe of the rear axle and the thrust line of the vehicle. The test is carried out visually via a laser point.

## Protective cover for CSC-Tool

---



### PRODUCT CHARACTERISTICS

- Premium all-round protection
- Quick and easy mounting
- Repels water, dust and oil

### Protective cover CSC-Tool/CSC-Tool SE

Item no. 8PZ 010 611-381

### CSC-Tool Digital protective cover Board

Item no. 8PZ 015 270-131

### CSC-Tool Digital protective cover for projector

Item no. 8PZ 015 270-121

\* Must be acquired by the customer if this type of vehicle service is requested

## Triplex storage box

---



### PRODUCT CHARACTERISTICS

- Safe housing for up to 10 reference panels for the CSC-Tool Mobile
- Light, compact and robust
- Can be stacked

---

Item no. 8PZ 010 624-701

---

## Lock detent pawl

---



### PRODUCT CHARACTERISTICS

- The lock detent pawl fixes the cross member of the CSC-Tool Mobile to the base frame
- This component is required to fix the system mount to the cross member of the CSC-Tool Mobile in any position (e.g. laterally).
- The system mount can be fixed in maximum position left or right without risk of the cross member being lifted out of the retaining bolts

---

Item no. 8PZ 010 624-971

---

## Magnetic laser (CSC 4-02)

---



The magnetic laser is used to adjust certain radar sensors. To do this, the laser beam is directed either onto the mirror of the radar sensor or onto the mounted mirror of the Radar Kit II (CSC 4-03) and then correctly adjusted by using the reflected laser point.

### PRODUCT CHARACTERISTICS

- With the magnetic laser, the radar sensor can be set to zero position before the calibration which makes the calibration procedure faster and easier. The magnetic laser is a valuable tool for replacing radar sensors
- Exact positioning of EVO plate towards the center of the radar sensor

### DELIVERY CONTENTS

- Magnetic laser
- Case

### REQUIREMENTS

- Angular adjustment plate/angular adjustment plate EVO

---

Item no. 8PZ 010 611-321

---

## Tape measure holder with tape measure

---



### PRODUCT CHARACTERISTICS

- Quick and easy adjustment of distance between CSC-Tool/SE and vehicle
- Exact positioning through moving the cross member
- Tape measure with magnet for easy mounting on wheel alignment module

### BASIC DELIVERY CONTENTS

- 2 × Measure holder
- 2 × Tape measure

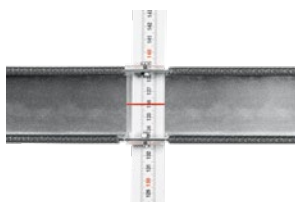
---

Item no. 301509

---

## CSC-Tool measuring rod 2200 mm

---



On some vehicle models the specified height value exceeds the scale range of the standard measuring rod. Therefore, we offer another measuring rod which is 200 mm longer.

### AFFECTED VEHICLES

- VW Crafter/T6

### BASIC DELIVERY CONTENTS

- Measuring rod 2200 mm

---

**CSC-Tool measuring rod 2200 mm**

Item no. 8PZ 015 269-911

---

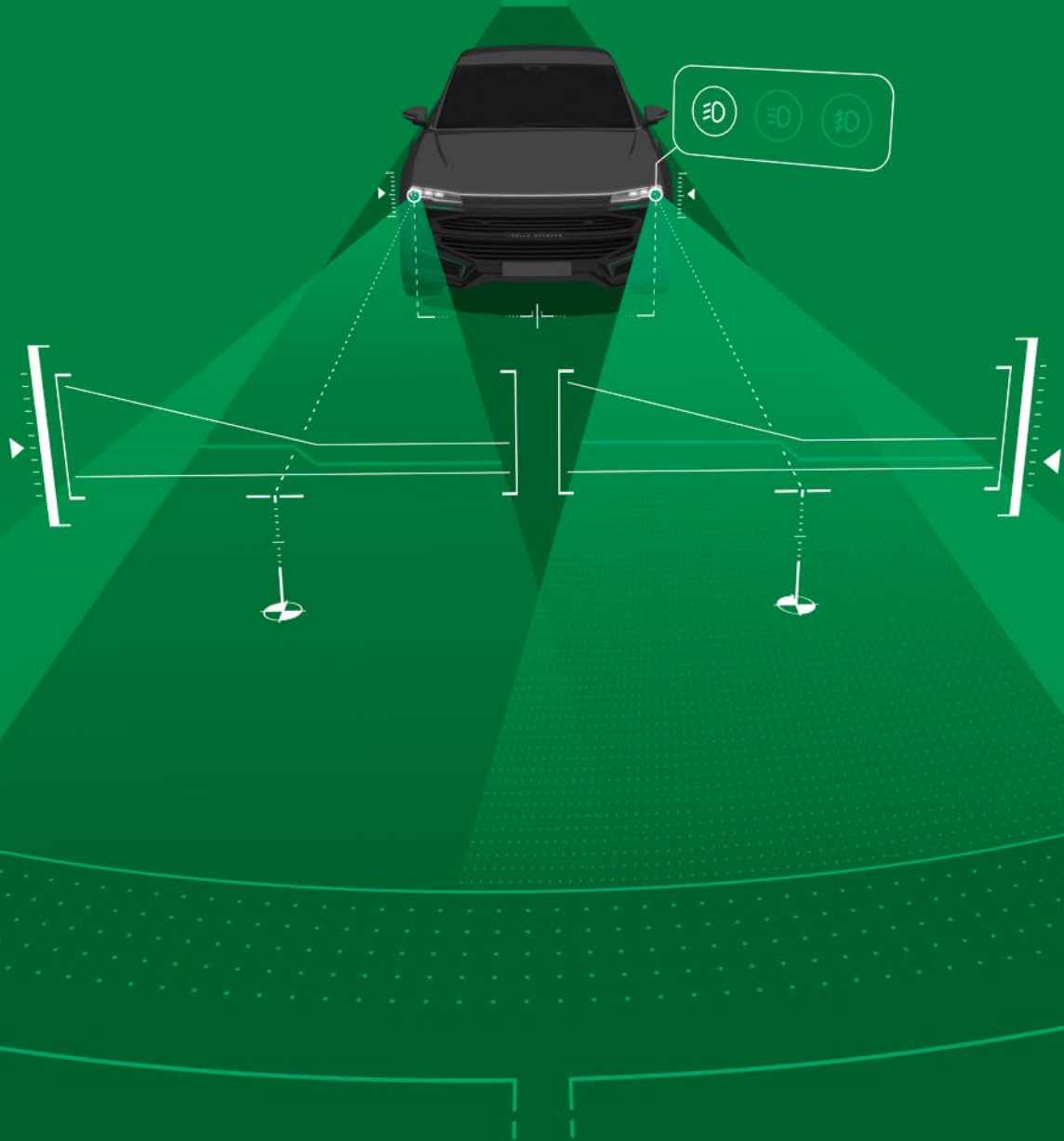
**CSC-Tool SE measuring rod 2200 mm**

Item no. 8PZ 015 269-531

---

# No compromises

regarding headlight adjustment



With the development of new headlight technologies and light assistance systems, the challenges faced by shops in testing and adjusting headlights are also increasing continuously. This concerns headlight aiming devices as well as the test environment.

With tools from the SEG series, workshops can be sure they're in safe hands.

More information



# Headlight aiming devices

## SEG V



### LIGHT ADJUSTMENT TO PERFECTION

The latest model combines extensive diagnostic expertise and lighting know-how. All functions of the SEG V can be operated easily and intuitively thanks to the 8.4" touch screen. It is also possible to show the display on a tablet, cell phone or PC and operate the SEG V via these end devices. Precise vehicle identification takes place e.g. through the Car History. With the vehicle recognition, the vehicle-specific algorithms for the correct light distribution are also automatically selected!

Thanks to the new – patent-pending – “AFS selection function”, it is no longer necessary to know the different AFS headlight systems (glare-free high beam) installed in the vehicle. The camera-based selection function ensures the correct selection of the AFS headlamp system based on stored target images. Additional information and values appear to support the operator during this step. Incorrect settings, especially in modern vehicles, are thus avoided. Thanks to the manual and/or automatic level compensation, inclinations and unevenness of the floor are compensated in both directions of the setup area of the SEG. The SEG V complies with the German legislation on headlight testing and aiming devices.

Item no. 8PA 007 732-401

#### Update Plus – SEG V

All updates in one package  
(max. 4 updates per year) for the SEG V  
Item no. 8PY 015 745-801

With an SEG V update licence the user receives not only several annual updates but also a remarkable extension of the number of integrated vehicles and their model-specific adjustment algorithms and numerous new functions.

SEG IV DLLX



Item no. 8PA 007 732-311

**LIGHT ADJUSTMENT MADE EASY**

Thanks to the scaling on the test screen of the SEG IV, you are able to test and precisely aim all current headlight systems like halogen headlights, xenon headlights, LED headlights and systems with high beam assist (vertical light/dark boundary).

Like all SEG tools from Hella Gutmann, the device is equipped with large plastic wheels with a special tread which means that it can also be used on rails. The wheel-mounted base is made of polymer concrete and therefore suitable for extreme loads. Thanks to its weight, the tool has a low center of gravity and great tilt stability.



SCOPE OF FUNCTIONS	SEG V	SEG IV DLLX
Digital luxometer	•*	•
Broadband sight**		•
Hybrid sight***	•	
Deflection mirror		•
Fresnel lens	•	•
Laser positioning aid		•
Level gauge/eccentric shaft for angle adjustment		•
Rotating column for aligning the optical housing****	•	•
Optional refitting to steel casters on adjustable rails	•	•
Automatic level compensation	•	
8.4" touch screen	•	
Vehicle recognition via Car History	•	
Interfaces: USB/Wi-Fi	•	
Workshop-Net (formerly asanetwork)	•	
Can be updated	•	
Wheel mounted base made from polymer concrete	•	•
Extended column, adjustment range up to 1650 mm		

\* Lux values are indicated in the measurements menu  
 \*\* Laser sight  
 \*\*\* Laser sight consisting of powerful laser and analog sight  
 \*\*\*\* Stainless steel column

# Rail systems

## Adjustable SEG rail system



Item no. 9XS 861 736-021

### Caster set

Item no. 9XS 862 004-021

### Extension set 1500 mm

Item no. 9XS 861 736-041

The adjustable rail system is a clever alternative to an expensive refitting of your workshop. The rail system is quickly set up and readjusted if needed. The tool convinces with its long service life and its attractive price. The basic set consists of 4 rails with a length of 1500 mm each and high-quality galvanized steel casters for the headlight aiming devices SEG IV and SEG V. The excellent stability of the set guarantees best results when measuring and adjusting headlights. Thus, it fulfills the different requirements of OE manufacturers as well as the headlight aiming directive applicable in Germany.

### ADVANTAGES AT A GLANCE

- Adjustable rail system
- Fulfills the requirements for the set-up area of the headlight adjustment directive applicable in Germany
- Quick setup
- Height adjustment is possible horizontally and vertically
- Unevenness of as much as 20 mm can be compensated
- For precise measurements and adjustments
- Readjustments possible at any time
- High-quality, heavy steel caster set for a higher tilt stability
- Solid construction
- Long service life
- Attractive price
- Optionally expandable
- And much more

### DELIVERY CONTENTS OF SEG RAIL SYSTEM, INDIVIDUAL LEVELING

- 4 × 1500 mm rails (2 × hexagonal rails, 2 pieces of flat steel)
- 30 × Hexagon-socket countersunk head screws with flange M6
- 30 × Fischer dowels M8 S
- 80 × Setscrews (40 pieces short 10 mm, 40 pieces long 25 mm)
- 20 × Shims
- 2 × Rubber stops
- Assembly instructions

### DELIVERY CONTENTS OF CASTER SET:

- 2 × Track casters
- 1 × Caster

## Rail system "Basic"



Item no. 9XS 861 736-001

The rail system "Basic" is ideal for the use in workshops whose floor properties already fulfil the legal requirements and the requirements of the OE manufacturers and where leveling is not necessary. Thanks to their low height, the rails cannot only be mounted on the floor but also recessed in the floor. Particularly practical is also the fact that the SEG IV and the SEG V can be used on the rail system with their standard wheels. Hence you can move the tool any time from the rail system to another workspace. The easy assembly and the excellent price-performance ratio are two further advantages of this system. The set consists of 2 rails each of which is 1500 mm long. A standard workspace requires 2 sets.

### ADVANTAGES AT A GLANCE

- Quick setup
- Several fields of application
- Excellent price-performance ratio
- Exact results of calibration/adjustment of headlight systems
- Can be extended any time by the requested length

### DELIVERY CONTENTS

- 2 × 1500 mm rails (1 × profile and 1 × track profile)
- 16 × Hex bolts DIN 571 6 × 40 mm
- 16 × Dowels S8

**HELLA AUSTRALIA PTY LTD**

15D Chifley Drive

P. O. Box 89

Moorabbin Airport, Victoria 3194 Australia

Customer Service: 1800 061 729

[info@hella-gutmann.com](mailto:info@hella-gutmann.com)

[hella-gutmann.com](http://hella-gutmann.com)

[hella.com/techworld/au](http://hella.com/techworld/au)